

# China Earthquake | Xi Jinping Calls For All-Out Operation

## Why In News

- A **6.2-magnitude earthquake** jolted China's Gansu-Qinghai border in the wee hours of Tuesday morning.
- The earthquake claimed the lives of at **least 111 people and left more than 305 people injured**.
- The provinces of Gansu and Qinghai have been most affected by the quake, but the epicentre of the quake was in Jishishan country.

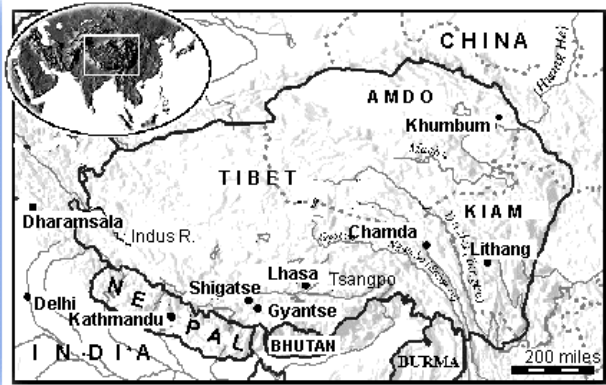


## All You Need To Know

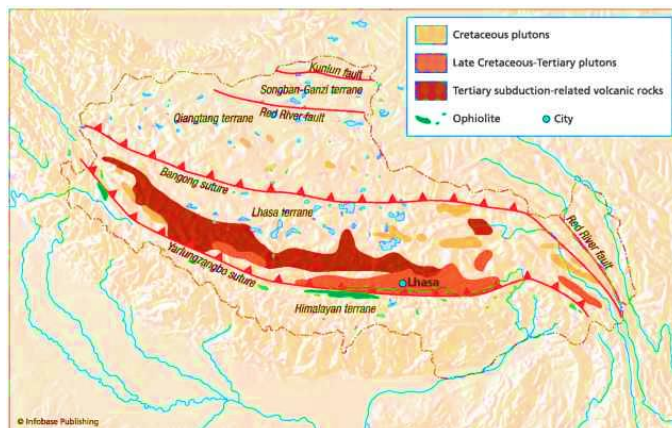
- Rescue work was under way with **Chinese President Xi Jinping** calling for “**all-out efforts**” in the search and relief work.
- Nearly **1,500 firefighters were deployed** with another 1,500 on stand-by, according to state media. More than 300 officers and soldiers were also mobilised for disaster relief.



- **Supplies including drinking water**, blankets, stoves and instant noodles were also being sent to the affected area.
- The **US Geological Survey** reported the quake was a magnitude 5.9, while the European Mediterranean Seismological Centre (EMSC) said it was a magnitude 6.1.



- The earthquake struck **Gansu's Jishishan county** at a depth of 10km (6 miles) at 11:59 pm local time on Monday (15:59 GMT), according to the USGS, which initially reported the magnitude at 6.0. Multiple aftershocks were reported. shallow quakes cause heavy damage to infrastructure.
- **Qinghai province** is adjacent to the **Tibet Himalayan region** which is prone to frequent earthquakes due to shifting of continental plates.
- Gansu has a population of about **26 million people** and includes part of the Gobi Desert.



- Earthquakes are common in western provinces such as Gansu, which lie on the eastern boundary of the Qinghai-Tibetan plateau, a tectonically active area.
- Some **200m yuan** (£22m; \$28m) in natural disaster relief funds has been allocated to Gansu and Qinghai provinces.

## Other Earthquakes

- In **September 2022**, a 6.6-magnitude quake hit Sichuan Province leaving almost 100 dead.
- A 7.9-magnitude quake in **Sichuan in 2008** left more than 87,000 people dead or missing, including 5,335 children who were in school at the time it happened.
- At least 242,000 people were killed in 1976 after an earthquake struck Tangshan in the worst natural disaster in Chinese history.

