

NDA-CDS

TOP 25 MCQS

PLANT GROWTH BIOLOGY



SHIVANGI MA'AM

"Cells Of Meristematic Tissue Lack In Which Of The Following Cell Organelle?"

- a) Vacuoles
- b) Plastids
- c) Golgi Apparatus
- d) More than one of the above

"Cells Of Meristematic Tissue Lack In Which Of The Following Cell Organelle?"

- a) Vacuoles
- b) Plastids
- c) Golgi Apparatus
- d) More than one of the above

Meristematic cells have immense potential to divide. For this purpose, they have dense **cytoplasm** and thin **cell wall**. **Vacuoles** possess **cell sap** and provide rigidity and turgidity to the **cell**. ... Due to this reason meristematic **cells lack vacuole**.

What Determines The Age Of A Tree?

- a) Circles on a tree trunk
- b) Number of leaves
- c) Leaf color
- d) Height of trees

What Determines The Age Of A Tree?

a) Circles on a tree trunk

b) Number of leaves

c) Leaf color

d) Height of trees



•The age of a tree is primarily determined by its growth rings, also known as tree rings or annual rings.

Select The Incorrect Statement With Reference To The Collenchyma :

- a) Chloroplasts may be present in collenchyma.
- b) Collenchyma allow easy bending without breakage of the young stem.
- c) Its cells are thickened at the corners due to deposition of lignin.
- d) Protoplasm is present in collenchyma.

Select The Incorrect Statement With Reference To The Collenchyma :

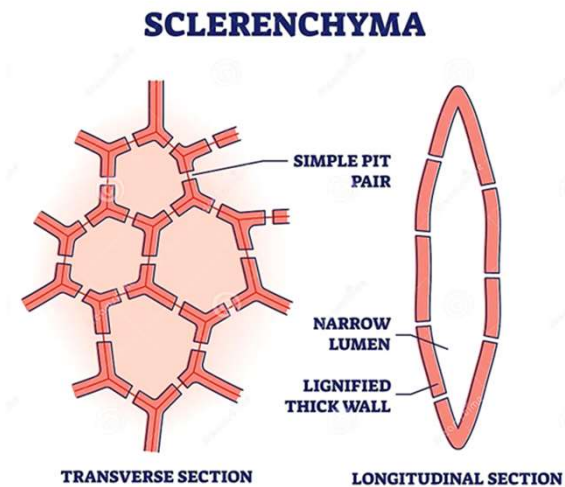
- a) Chloroplasts may be present in collenchyma.
 - b) Collenchyma allow easy bending without breakage of the young stem.
 - c) Its cells are thickened at the corners due to deposition of lignin.**
 - d) Protoplasm is present in collenchyma.
- Cell wall is unevenly thickened with cellulose and pectin

Which Permanent Tissue Makes The Plant Hard And Stiff?

- a) Chlorenchyma
- b) Collenchyma
- c) Parenchyma
- d) Sclerenchyma

Which Permanent Tissue Makes The Plant Hard And Stiff?

- a) Chlorenchyma
- b) Collenchyma
- c) Parenchyma
- d) Sclerenchyma**

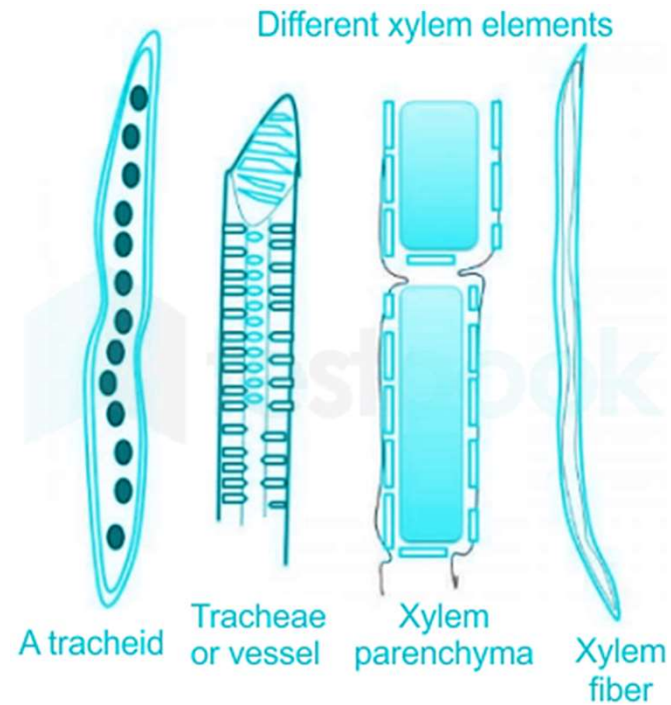


Which Part Of Xylem Tissue In Plants Stores Food.

- a) Vessels
- b) Xylem fibres
- c) Xylem parenchyma
- d) Tracheids

Which Part Of Xylem Tissue In Plants Stores Food.

- a) Vessels
- b) Xylem fibres
- c) Xylem parenchyma**
- d) Tracheids



Among The Following Statements Which Is/Are Correct?

1. Plants convert energy from sunlight into food stored as carbohydrates
2. Plants have chlorophyll
3. Plant cells do not have cell walls

- a) Only 1 is correct
- b) Only 1 and 2 are correct
- c) Only 1 and 3 are correct
- d) All are correct

Among The Following Statements Which Is/Are Correct?

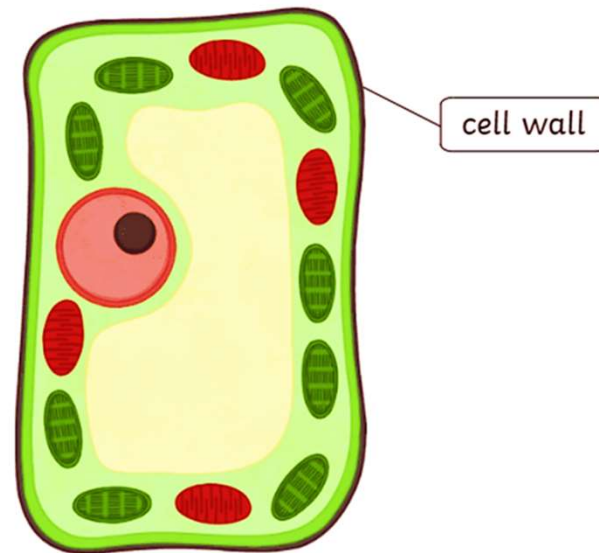
1. Plants convert energy from sunlight into food stored as carbohydrates
2. Plants have chlorophyll
3. Plant cells do not have cell walls

a) Only 1 is correct

b) Only 1 and 2 are correct

c) Only 1 and 3 are correct

d) All are correct



In-plant Tissues, The Cell Walls Of _____ Are Coagulated By 'Suberin 'Which Makes Them Impervious To Gas And Water Molecules.

- a) Epidermis
- b) Cork
- c) Stomata
- d) Phloem fibres

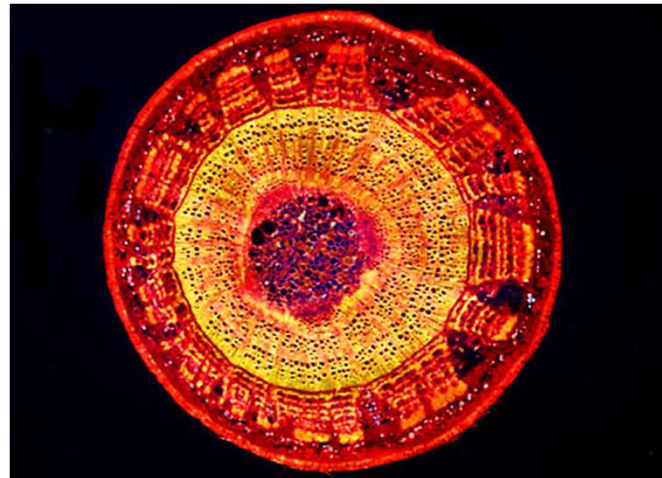
In-plant Tissues, The Cell Walls Of _____ Are Coagulated By 'Suberin 'Which Makes Them Impervious To Gas And Water Molecules.

a) Epidermis

b) Cork

c) Stomata

d) Phloem fibres

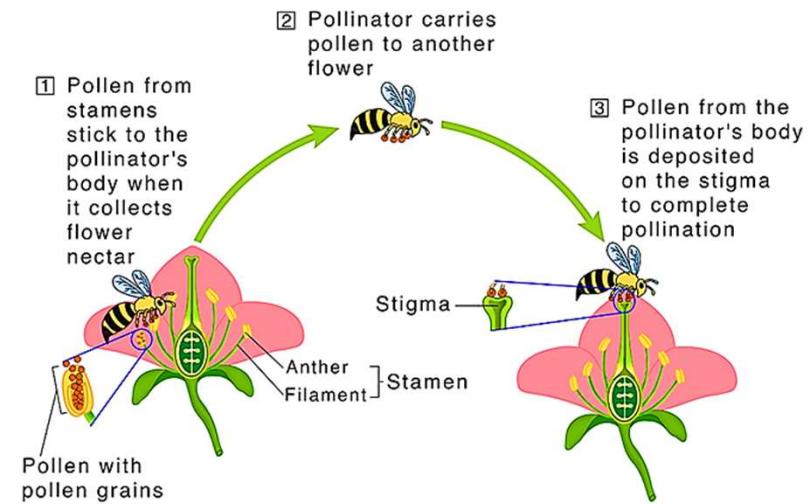


The Act Of Transferring Pollen Grains From The Male Anther Of A Flower To The Female Stigma Is Called:

- a) Photosynthesis
- b) Polarization
- c) Pollination
- d) More than one of the above

The Act Of Transferring Pollen Grains From The Male Anther Of A Flower To The Female Stigma Is Called:

- a) Photosynthesis
- b) Polarization
- c) Pollination**
- d) More than one of the above



From Which Part Of The Carpel Are The Seeds Formed?

- a) Ovule
- b) Ovary
- c) Style
- d) More than one of the above

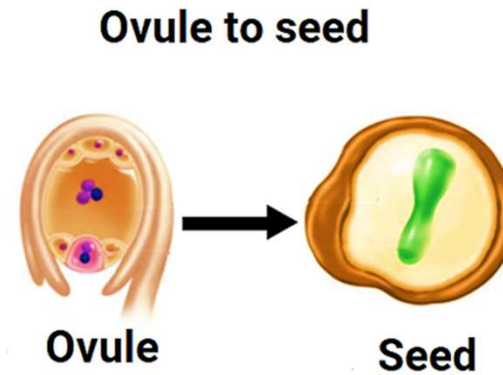
From Which Part Of The Carpel Are The Seeds Formed?

a) Ovule

b) Ovary

c) Style

d) More than one of the above



Which One Of The Following Statements Regarding Post-fertilization Development In Flowering Plants Is Incorrect?

- a) Ovary develops into fruit
- b) Ovules develop into the embryo sac
- c) Central cell develops into endosperm
- d) More than one of the above

Which One Of The Following Statements Regarding Post-fertilization Development In Flowering Plants Is Incorrect?

a) Ovary develops into fruit

b) Ovules develop into the embryo sac

c) Central cell develops into endosperm

d) More than one of the above

POST-FERTILISATION :
STRUCTURES AND EVENTS

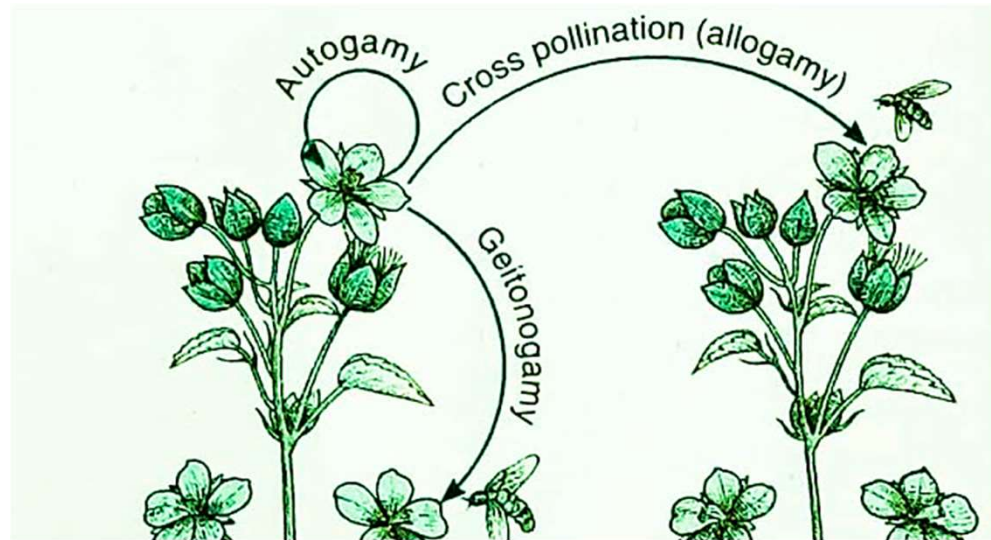
- ▶ PEN → Endosperm (3n)
- ▶ Egg → Zygote (2n) → Embryo
- ▶ Ovule → seed
- ▶ Ovary → Fruit.

Transfer Of Pollen Grains From The Anther To The Stigma Of Another Flower Of The Same Plant Is Called

- a) Autogamy
- b) Geitonogamy
- c) Xenogamy
- d) None of the above

Transfer Of Pollen Grains From The Anther To The Stigma Of Another Flower Of The Same Plant Is Called

- a) Autogamy
- b) Geitonogamy
- c) Xenogamy
- d) None of the above



The Correct Sequence Of Parts Of Female Reproductive Organ In Plants

- a) Ovary, Style, Thalamus and Stigma
- b) Stigma, Style, Ovary and Thalamus
- c) Ovary, Stigma, Style and Thalamus
- d) Style, Stigma, Ovary and Thalamus

The Correct Sequence Of Parts Of Female Reproductive Organ In Plants

- a) Ovary, Style, Thalamus and Stigma
- b) Stigma, Style, Ovary and Thalamus**
- c) Ovary, Stigma, Style and Thalamus
- d) Style, Stigma, Ovary and Thalamus

Structure of carpel



Self-pollination Will Lead To _____.

a) Overbreeding

b) Outbreeding

c) Inbreeding

d) All of the above

Self-pollination Will Lead To _____.

a) Overbreeding

b) Outbreeding

c) Inbreeding

d) All of the above

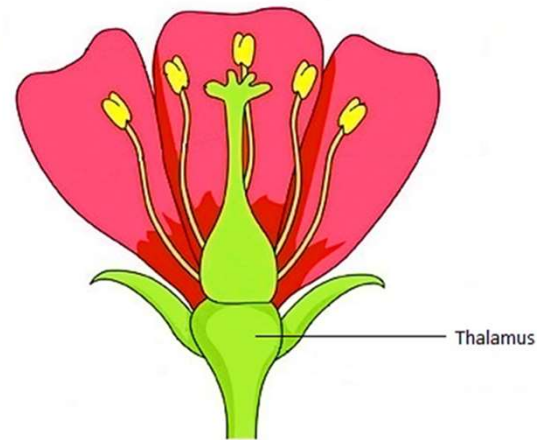
Self-pollination leads to the production of plants with less genetic diversity, since genetic material from the same plant is used to form gametes, and eventually, the zygote.

What Is The Basis On Which The Parts Of The Flowers Are Present?

- a) Placenta
- b) Sepal
- c) Fallopian Tube
- d) Thalamus

What Is The Basis On Which The Parts Of The Flowers Are Present?

- a) Placenta
- b) Sepal
- c) Fallopiian Tube
- d) Thalamus**



Which Of The Following Is The Basic Unit Of Study Of Ecology?

- a) Population
- b) Environment
- c) Biosphere
- d) Ecosystem

Which Of The Following Is The Basic Unit Of Study Of Ecology?

- a) Population
- b) Environment
- c) Biosphere
- d) Ecosystem**

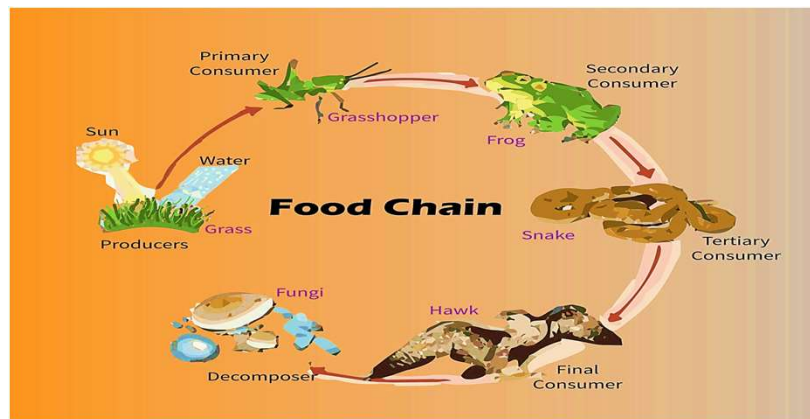
Ecological units comprise concepts such as population, community, and - in particular - the ecosystem as the basic unit, which are at the basis of ecological theory and research.

Which Of The Following Orders Of Food Chain Is Correct?

- a) Herbivorous, Omnivorous, Carnivorous, Detrivorous
- b) Omnivorous, Herbivorous, Carnivorous, Detrivorous
- c) Herbivorous, Omnivorous, Detrivorous, Carnivorous
- d) Herbivorous, Carnivorous, Omnivorous, Detrivorous

Which Of The Following Orders Of Food Chain Is Correct?

- a) Herbivorous, Omnivorous, Carnivorous, Detrivorous
- b) Omnivorous, Herbivorous, Carnivorous, Detrivorous
- c) Herbivorous, Omnivorous, Detrivorous, Carnivorous
- d) Herbivorous, Carnivorous, Omnivorous, Detrivorous**



'Care And Share' Policy Of The Forest Applies To

- a) Tribal people
- b) Forest communities
- c) Villagers
- d) JFMCs

'Care And Share' Policy Of The Forest Applies To

a) Tribal people

b) Forest communities

c) Villagers

d) JFMCs

- The local people help in the development and protection of forests and, in return, they get a share in the final harvest of timber in addition to the Non-Timber Forest Products (NTFPs).

When is World Wildlife Week observed?

a) First week of September

b) Last week of September

c) First week of October

d) Last week of October

- Wildlife Week is celebrated annually across India between 2nd to 8th October.

Project Tiger Was Started In

a) 1973

b) 1975

c) 1976

d) 1977

Project Tiger Was Started In

a) 1973

b) 1975

c) 1976

d) 1977

- Project Tiger was launched in 1973 with 9 tiger reserves for conserving the declining population of India's national animal, the tiger



The objective of environmental education is

- a) raise consciousness about environmental education
- b) to teach environmentally appropriate behavior
- c) create an environmental ethic that fosters awareness about ecological interdependence of economic, social and political
- d) All of the above

The objective of environmental education is

- a) raise consciousness about environmental education
- b) to teach environmentally appropriate behavior
- c) create an environmental ethic that fosters awareness about ecological interdependence of economic, social and political

d) All of the above

- Environmental education is a process that allows individuals to explore environmental issues, engage in problem-solving, and take action to improve the environment.

Genetically Dwarf Plants Can Be Made Taller By:

- a) Gibberellins
- b) Auxins
- c) Cytokinins
- d) Vernalins

Genetically Dwarf Plants Can Be Made Taller By:

a) **Gibberellins**

b) Auxins

c) Cytokinins

d) Vernalins

- **Gibberellic Acid (GA)**, a plant hormone, plays a critical role in promoting **stem elongation**, which can cause dwarf plants to grow taller. GAs belong to a group of chemicals called gibberellins, which are involved in various plant processes, including seed germination, dormancy, flowering, and leaf and fruit aging.

Application of which of the following phytohormones has resulted in this increased yield as the hormone is known to produce female flowers in the plants:

- a) Cytokinin
- b) ABA
- c) Gibberellin
- d) Ethylene

Application of which of the following phytohormones has resulted in this increased yield as the hormone is known to produce female flowers in the plants:

- a) Cytokinin
- b) ABA
- c) Gibberellin
- d) Ethylene**

- Ethephon is commonly used ethylene it promotes female flowering in cucumber and helps in improving the yield.

When A Pea Tendril Comes In Contact Of A String, It Coils Around It. What Kind Of Tropic Response Does It Exhibit?

- a) Chemotropism
- b) Phototropism
- c) Heliotropism
- d) Thigmotropism

When A Pea Tendril Comes In Contact Of A String, It Coils Around It. What Kind Of Tropic Response Does It Exhibit?

- a) Chemotropism
- b) Phototropism
- c) Heliotropism
- d) Thigmotropism**

Thigmotropism/ Haptotropism:

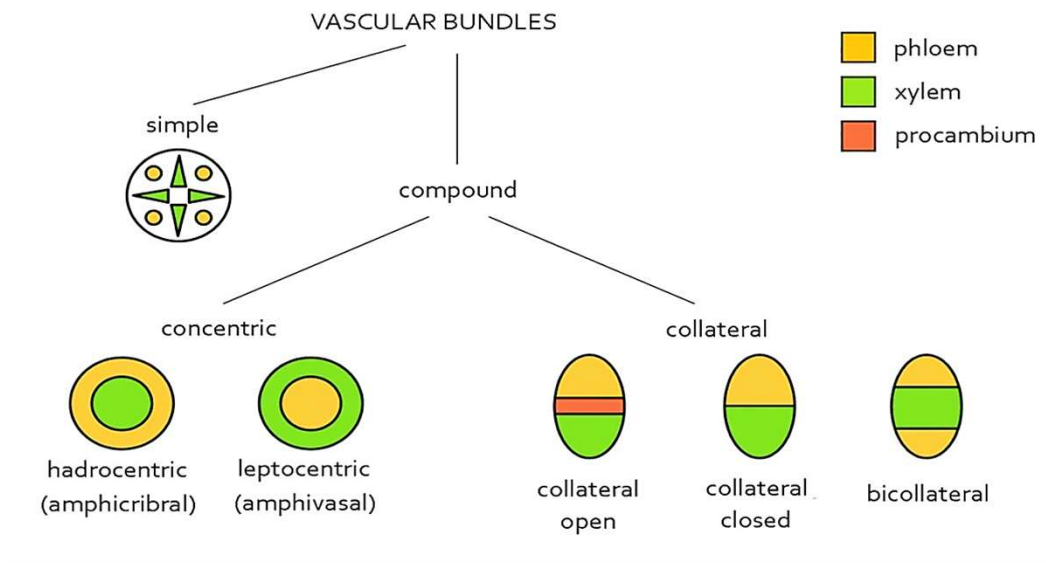
- Touch / friction generated responses shown by the plants.
- Tendrils and twiners are examples of this type of movement.

When The Xylem Is Surrounded By Phloem Or Phloem Is Surrounded By Xylem, Such Vascular Bundles Are Known As _____.

- a) Radial
- b) Conjoint
- c) Collateral
- d) Concentric

When The Xylem Is Surrounded By Phloem Or Phloem Is Surrounded By Xylem, Such Vascular Bundles Are Known As _____.

- a) Radial
- b) Conjoint
- c) Collateral
- d) Concentric**

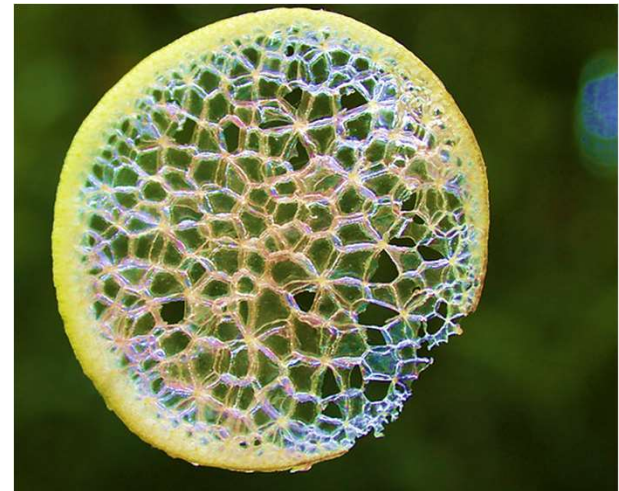


Aerenchyma Is Helpful To Plants By

- a) Providing buoyancy in hydrophytes
- b) Promoting Photosynthesis
- c) Giving mechanical strength to plants.
- d) Giving flexibility to plants.

Aerenchyma Is Helpful To Plants By

- a) Providing buoyancy in hydrophytes
- b) Promoting Photosynthesis
- c) Giving mechanical strength to plants.
- d) Giving flexibility to plants.



Choose from our Courses

SSB INTERVIEW
B, AFSB & NSB

- Live Classes
- In-Depth Lectures
- SSB Notes
- Mock Tests
- Current Affairs
- Defence Current Affairs

USE CODE: **"WARRIOR10"**
FOR 10% OFF ON SSB COURSE

SSB Interview Online Coaching 2023 - 2024

19 courses ₹9999 **₹6999**

CDS 1 2024
A, AFA & INA

- Live Classes
- In-Depth Lectures
- Study Notes
- Mock Tests
- Current Affairs
- Defence Current Affairs

USE CODE: **"WARRIOR10"**
FOR 10% OFF ON CDS COURSE

CDS Exam Online Coaching 2024

19 courses ₹7999 **₹5999**

NDA 1 2024
National Defence Academy

- Live Classes
- In-Depth Lectures
- Study Notes
- Mock Tests
- Current Affairs
- Defence Current Affairs

USE CODE: **"WARRIOR10"**
FOR 10% OFF ON NDA COURSE

NDA Exam Online Coaching 2024

19 courses ₹7999 **₹5999**

CDS 1 2024
OTA Chennai

- Live Classes
- In-Depth Lectures
- Study Notes
- Mock Tests
- Current Affairs
- Defence Current Affairs

USE CODE: **"WARRIOR10"**
FOR 10% OFF ON CDS COURSE

CDS Exam OTA Online Coaching 2024

18 courses ₹7499 **₹5499**

AFCAT 1 2024
Air Force Common Admission Test

- Live Classes
- In-Depth Lectures
- Study Notes
- Mock Tests
- Current Affairs
- Defence Current Affairs

USE CODE: **"WARRIOR10"**
FOR 10% OFF ON AFCAT COURSE

AFCAT Exam Online Coaching 2024

18 courses ₹7999 **₹5999**

Territorial Army Exam Online Coaching 2023

USE CODE: **"WARRIOR10"**
FOR 10% OFF ON TA COURSE

17 courses ₹7999 **₹5999**

ACC Exam Coaching 2024

USE CODE: **"WARRIOR10"**
FOR 10% OFF ON ACC COURSE

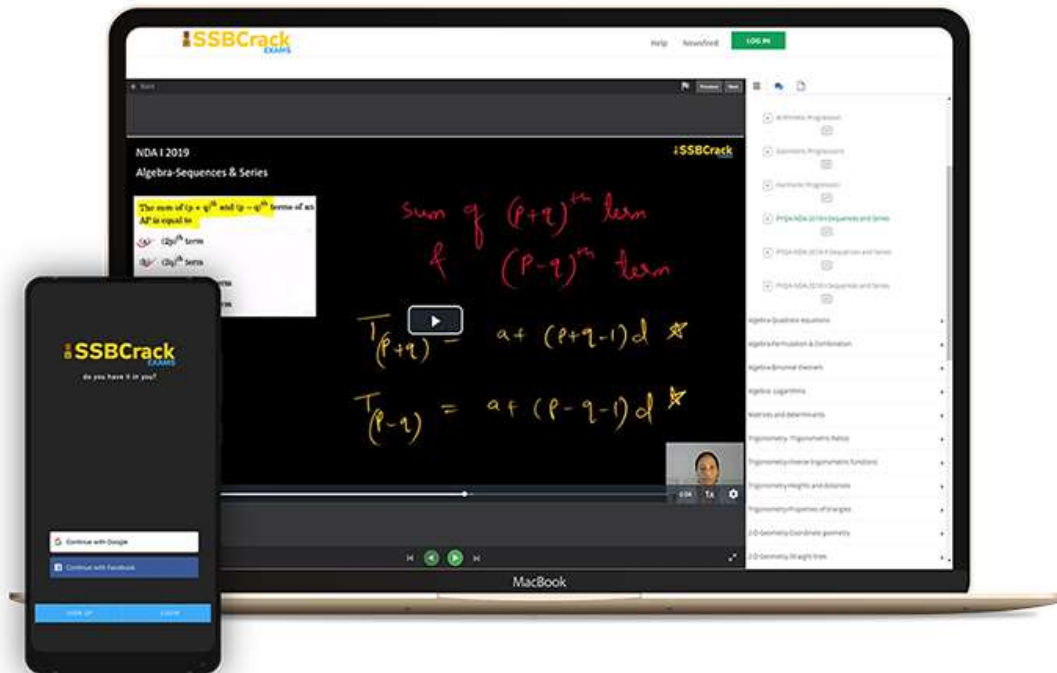
15 courses ₹5999 **₹4999**

UPSC CAPF Assistant Commandant Online Cours...

27 courses ₹4999 **₹3999**



India's Most Popular Portal for Defence Exam Preparation



www.ssbcrackexams.com

CODE: WARRIOR10

get an extra 10% off on all courses

